

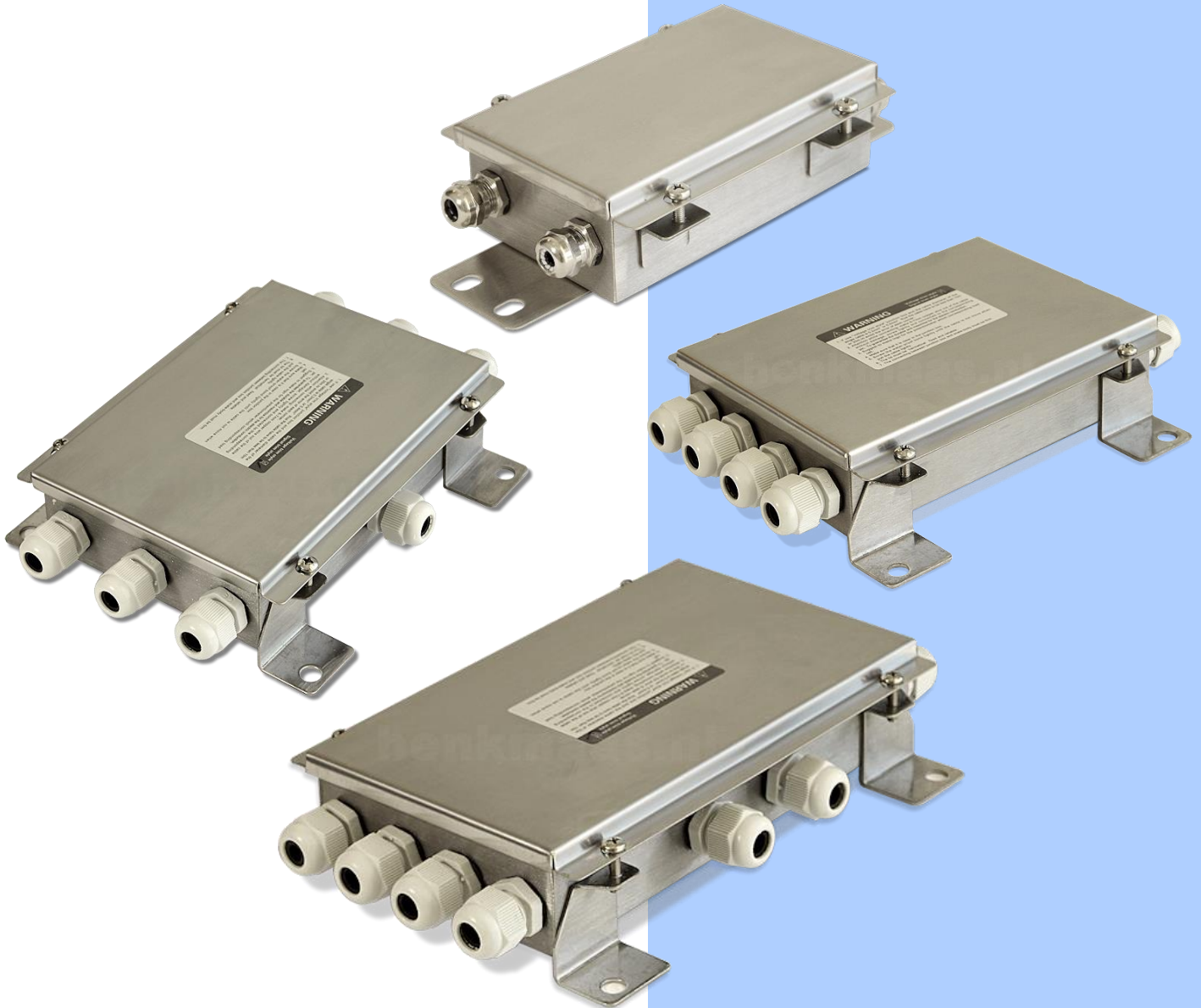
Junction box

series AD-R

Screwed connections and signal adjustment trimmers for quick connection of 2 up to and including 6 load cells, for an accurate and reliable connection.

Properties

- stainless steel box, protection class IP65
- electronic board connection for 4, 6, 8 or 10 load cells
- stainless steel grommets for AD-R4
- plastic grommets for AD-R6, AD-R8, AD-R10



type	AD-R4	AD-R6	AD-R8	AD-R10
dimensions mm	90 x 175 x 40	153 x 200 x 48	153 x 200 x 48	152 x 232 x 50
grommets	4 + 1	6 + 1	8 + 1	10 + 1
attachable load cells	4	6	8	10

