

S-type load cells



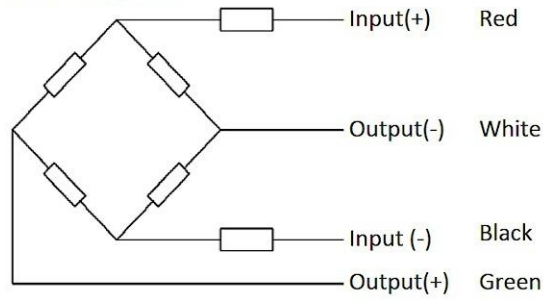
Type AS4H

Capacity	Accuracy
50 kg	C3
100 kg	C3
250 kg	C3
500 kg	C3 Excluded from OIML
1 t	C3 Excluded from OIML
2.5 t	C3 Excluded from OIML

- **Nickel plated alloy steel IP67 S-type load cell**
- Tension and compression applications
- Suitable for hanging, hopper and other weighing devices
- High accuracy, high reliability
- Also available in imperial capacities and dimensions

Accuracy class		OIML R60 C3	C3
Output sensitivity (= FS)	mV/V	3.0 ± 0.008	
Maximum capacity (E _{max})	t	0.05, 0.1, 0.25	0.5, 1, 2.5
Max.number of load cell intervals	n _{LC}	3000	
Ratio of min. LC verification interval	Y = E _{max} / v _{min}	15000	14000
Combined Error	%FS	≤ ± 0.020	
Minimum dead load	of E _{max}	0%	
Safe overload	of E _{max}	150%	
Ultimate overload	of E _{max}	300%	
Zero balance	of FS	< ± 1.0 %	
Excitation, recommended voltage	V	5 ~ 12	
Excitation maximum	V	18	
Input resistance	Ω	430 ± 60	
Output resistance	Ω	351 ± 2.0	
Insulation resistance	M Ω	≥ 5000 (at 50VDC)	
Compensated temperature	°C	-10 ~ +40	
Operating temperature	°C	-35 ~ +65	
Storage temperature	°C	-40 ~ +70	
Element material		Nickel plated alloy steel	
Ingress Protection (acc. to EN 60529)		IP67	
Recommended torque on fixation	Nm	M8: 25	M12: 75 M20: 450

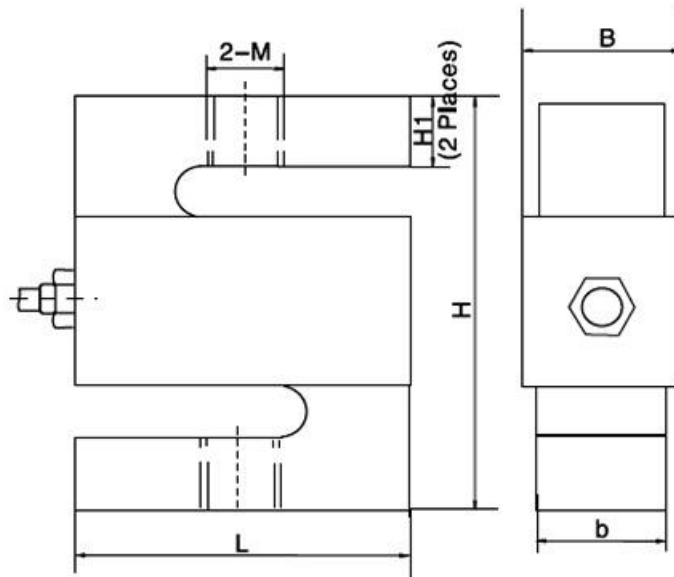
4-wire diagram



- Shielded, 4 conductor cable
- cable diameter: Ø5mm
- Standard cable length: 6 m
- Shield not connected to the element

Wiring Code

Colour	Function
Red	Input +
White	Output -
Black	Input -
Green	Output +
Blue	Sense +
Yellow	Sense -



Dimensions in mm

Capacity	L	H	b	B	H1	M
50 kg	50.8	63.5	12.7	16.5	10.2	M8
100 kg	50.8	63.5	12.7	16.5	10.2	M8
250 kg	50.8	63.5	19.05	22.8	10.2	M12
500 kg	50.8	63.5	19.05	22.8	10.2	M12
1 t	50.8	63.5	25.4	29.2	10.2	M12
2.5 t	76.2	101.6	25.4	29.2	15.2	M20