

Single Point Load Cell

model **LA250-D**



Properties

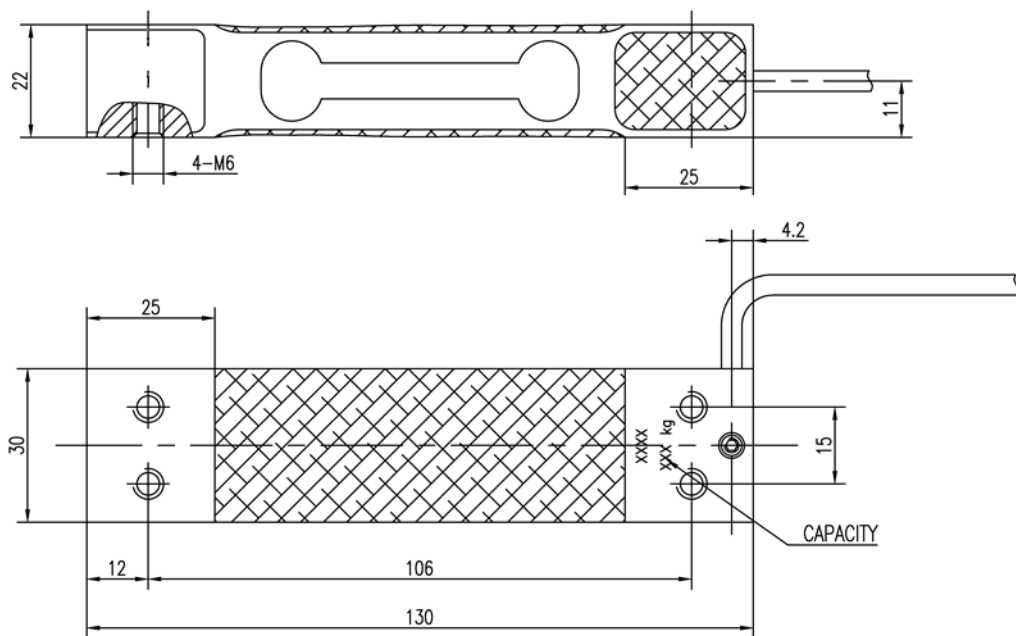
- capacities CE-verifiable: 3, 5, 7, 10, 15, 20, 30, 50, 100 kg
- version anodised aluminium
- protection class **IP 66**
- accuracy class **C3**
- for weighing platforms up to 350 x 350 mm
- can be used as a replacement for type 1022

PARAMETER	UNIT	VALUE
OIML Accuracy		C3
Rated capacity (E ^{max})	kg	3, 5, 7, 10, 15, 20, 30, 50, 100
Sensitivity	mV/V	2.00
Sensitivity tolerance	± mV/V	0.20
Zero balance	± mV/V	0.10
Maximum Number of Intervals		3000
Y=E ^{max} /V ^{min}	Minimum	10000
Z=E ^{max} /(2*DR)	Minimum	3000
Eccentric loading error	±%/cm	0.0042
Maximum platform size	cm	35x35
Nominal temperature range	°C	-10 to +40
Service temperature range	°C	-30 to +70
Limit load	% of R.C.	>150
Break load	% of R.C.	>300
Nominal excitation	V	10
Max. excitation	V	15
Input impedance	Ohm	406 ± 15
Output impedance	Ohm	350 ± 3
Insulation resistance	MOhm	>2000
Compensation circuit type		Balanced Bridge
Cable length	Meter	3.0
Cable type		6x26 AWG, Black PVC Jacket
Color code	Yellow	Shield
	Green	Excitation +
	Black	Excitation -
	Red	Signal +
	White	Signal -
	Blue	Sense +
	Brown	Sense -
Construction		Aluminum Alloy
Protection class to IEC529		IP 66

type	LA250-D-5	LA250-D-10	LA250-D-20	LA250-D-50	LA250-D-100
capacity	5 kg	10 kg	20 kg	50 kg	100 kg



Dimensions



Single Point Load Cell LA250-D

Dimensions in mm

