

Single Point Load Cell

model LA360-A

Properties

- CE-verifiable capacities: 50, 100, 200 kg
- version anodised aluminium
- protection class **IP 66**
- accuracy class **C3**
- for weighing platforms up to and included 400 x 400 mm
- the special humidity resistant protective coating assures long-term stability over the entire compensated temperature range
- can be used as a replacement for type 1242

Technical Data

PARAMETER	UNIT	VALUE
OIML Accuracy		C3
Rated capacity (E ^{max})	kg	50, 100, 200
Sensitivity	mV/V	2.00
Sensitivity tolerance	± mV/V	0.20
Zero balance	± mV/V	0.10
Maximum Number of Intervals		3000
Y=E ^{max} /V ^{min}	Minimum	10000
Z=E ^{max} /(2*DR)	Minimum	3000
Eccentric loading error	±%/cm	0.0042
Maximum platform size	cm	40x40
Nominal temperature range	°C	-10 to +40
Service temperature range	°C	-30 to +70
Limit load	% of R.C.	150
Break load	% of R.C.	300
Nominal excitation	V	10
Max. excitation	V	15
Input impedance	Ohm	406 ± 15
Output impedance	Ohm	350 ± 3
Insulation resistance	MOhm	>2000
Compensation circuit type		Balanced Bridge
Cable length	Meter	3.0
Cable type		6x26 AWG, Black PVC Jacket
Color code	Yellow	Shield
	Green	Excitation +
	Black	Excitation -
	Red	Signal +
	White	Signal -
	Blue	Sense +
	Brown	Sense -
Construction		Anodised Aluminum Alloy
Protection class to IEC529		IP 66

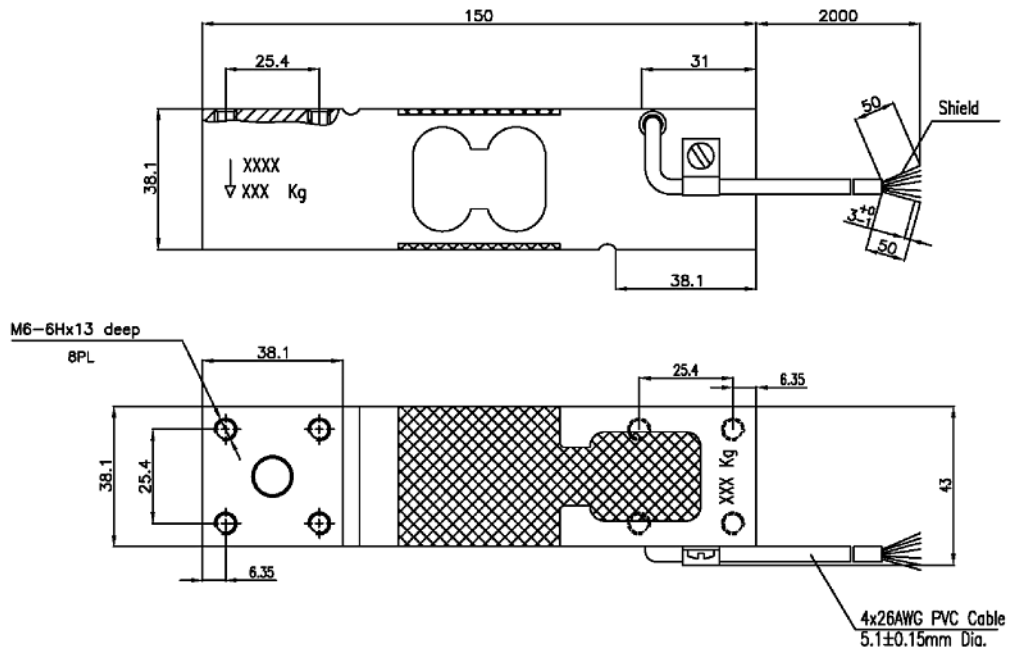


Versions

type	LA360-A-50	LA360-A-100	LA360-A-200
capacity	50 kg	100 kg	200 kg



Dimensions



Single Point Load Cell LA360-A

Dimensions in mm

