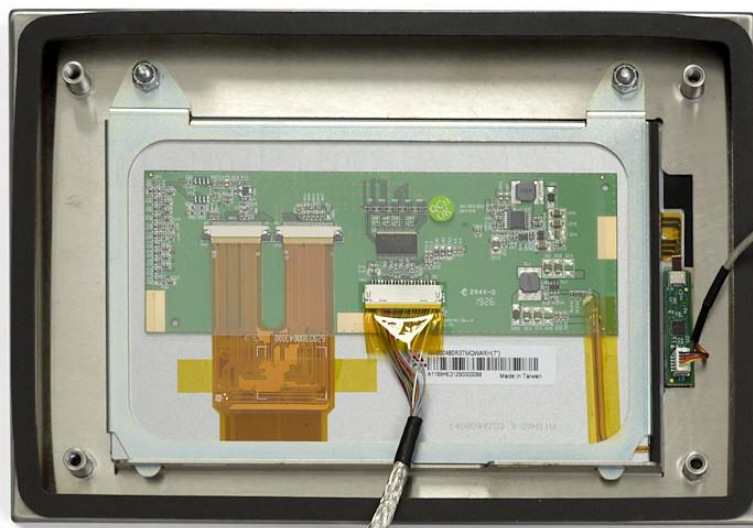


Weight Indicator

model UP-7

-1-

Model UP-7 is an innovative fast touchscreen weight indicator designed for versatile contemporary and future multitasking. More than 150 built-in functions simplify programming and custom applications are realized with the optional Windows PC software.



Standard features

- **CE-verifiable**
- resistive color touchscreen that can be used with gloves
- version for panel mounting, for controlling the different weighing platforms
- 7-inch, 800 x 480 pixels (152.4 x 91.4 mm) backlit TFT color graphic display; brightness adapts to the ambient light conditions
- highly customizable graphical user interface
- on-screen keyboard available during entry mode or use of an external keyboard
- multi-language operation and text entry keypad for scale operations, numeric entry and navigation
- more than 150 built-in functions for programming
- customize applications and data tables with optional software
- built-in web server for remote access, systems integration and data monitoring
- up to eight scales connectable
- multi-range/interval weighing functions
- 8 digital I/O for control and pulse count
- 100 setpoints, 18 configurable setpoint types
- 22 soft keys with 10 user-defined
- 2 RS-232 and RS-485 serial ports
- USB, Ethernet TCP/IP, Wi-Fi Direct and Bluetooth® ports

See further page 2

Options i.a.

- controller assembly



Weight Indicator

model UP-7

-2-

Specifications

- 16 x 350Ω or 16 x 700Ω load cells per A/D card
- resolution:
 - internal 1/8.000.000
 - display: 7 digits, / 1/1.000.000
- system linearity $\pm 0,01\%$ full scale
- digital I/O:
 - 8 I/O channels on CPU board
 - optional 24-channel I/O expansion boards
- communication ports:
 - port 1 & 2: full duplex RS-232 with CTS/RTS, RS-422/485
 - baud rate: 1200 to 115200
 - port 3: USB 2.0 Device (Micro)
 - port 4: Bluetooth® SPP 2.1+EDR
 - USB host: (2) Type A Connectors max 500 mA
 - ethernet: Wired 10/100 Auto-MDX
 - ethernet: Wireless 802.11 b/g/n 2.4GHz
- 460 MB onboard database storage (SQLite)
- up to 32 GB micro SD card (optionally available)
- on-screen keyboard for text and numeric entry
- USB port for flash drive, keyboard and printer
- temperature range:
 - certified: -10 ° C tot 40 ° C
 - operating: -20 ° C tot 55 ° C
- version: recessed / panel mounting for touch control only; front panel 229 x 158 mm (see dimensional drawing)
- weight: 3 kg
- front panel made of 304 stainless steel, class IP69K
- power: 100-240 VAC, 50-60 Hz

UP-7 Touch Screen Indicator

Dimensions in mm

